



Navicat Monitor

Navicat Monitor is a safe, simple and agentless remote server monitoring tool that is packed with powerful features to make your monitoring effective as possible. Monitored servers include MySQL, MariaDB and SQL Server, and compatible with cloud databases like Amazon RDS, Amazon Aurora, Oracle Cloud, Google Cloud and Microsoft Azure. Navicat Monitor is a server-based software which can be accessed from anywhere via a web browser. With web access, you can easily and seamlessly keep track of your servers around the world, around the clock.

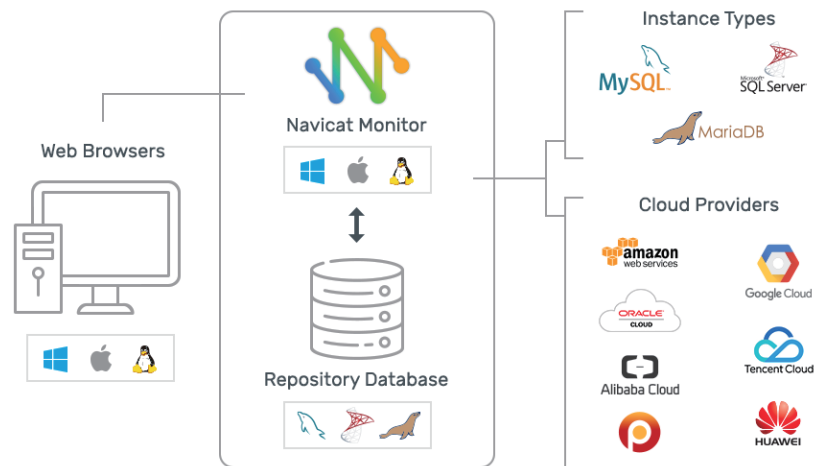


Feature Overview

Agentless Architecture

Navicat Monitor applies agentless architecture to monitor your MySQL, MariaDB and SQL Server, and collect metrics at regular intervals. It collects process metrics such as CPU load, RAM usage, and a variety of other resources over SSH/SNMP. Navicat Monitor can be installed on any local computer or virtual machine and does not require any software installation on the servers being monitored.

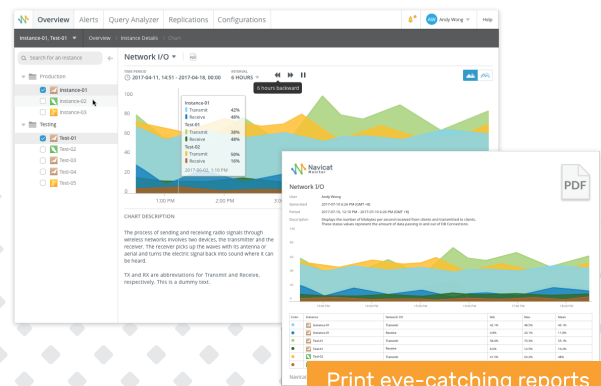
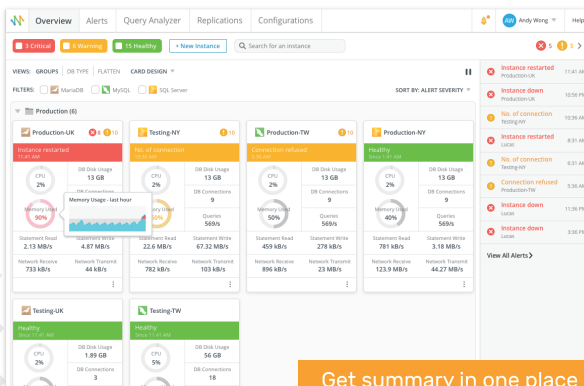
Navicat Monitor requires a repository to store alerts and metrics for historical analysis. The repository database can be an existing MySQL, MariaDB, PostgreSQL, SQL Server, or Amazon RDS instance.



Real-time Performance Monitoring

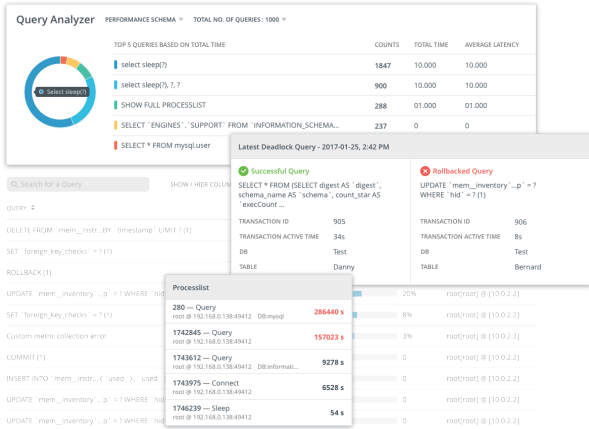
Navicat Monitor includes a rich set of real-time and historical graphs that allow you to drill down into server statistic details.

It gives you a detailed view of each server load and performance regarding its availability, disk usage, network I/O, table locks and more, which allows you to easily track the deviations and traffic among servers, as well as examine possible solutions and adjust your server settings.



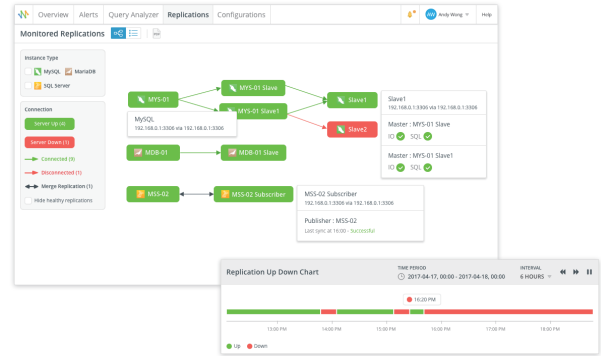
Query Analyzer

Monitor your queries in real time to quickly improve the performance and efficiency of your server. This powerful Query Analyzer shows the summary information of all executing queries and lets you easily uncover the problematic queries, such as identifying top queries with cumulative execution time count, slow queries with unacceptable response time, and detecting deadlocks when two or more queries permanently block each other. Navicat Monitor summarizes queries smartly so you get to see how many and which types of query are causing trouble.



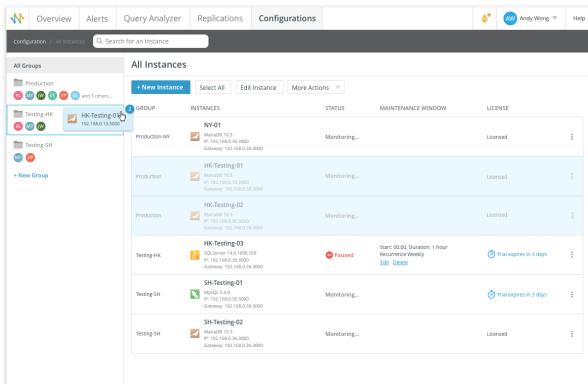
Replication

Apply schematic diagrams to visually represent the relationship between master servers and slaves. You can monitor the overall health of a replication topology as a whole, each individual node, and each replication subsystem to make sure the data on the replicated servers is always up to date.



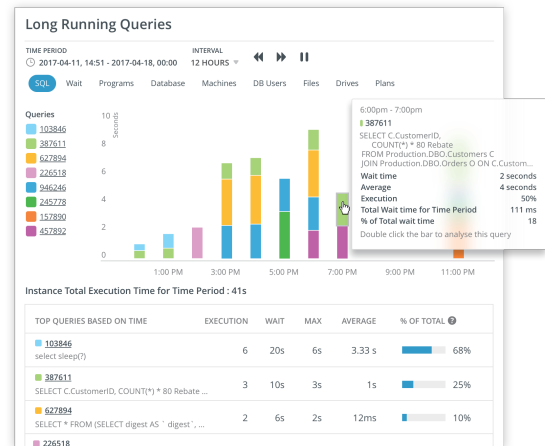
Instances Management

Organize your servers into groups to make it easier for users to find them by category. Assign users to specific groups as members and apply the same alert configuration settings to them effortlessly. All members will get notified when an alert is raised.



Long Running Queries

Track the history of the performance of a query over time, and display all queries with the longest wait times. Analyze and understand the evolution of each individual query. You can further troubleshoot the query and find out what caused the high resources consumption.



Alert Customization

Set custom alert thresholds to monitor your infrastructure. Receive alerts when the threshold rules that you defined are reached. For example: when CPU utilization exceeds 90% for more than 30 minutes.

Roles Manager

Set up user access rights and restrictions by assigning roles to users. Roles can be mapped to any users like external LDAP/AD users or the local users created in Navicat Monitor. Customize the pre-defined roles to best fit your needs or create new roles with customized privileges settings to restrict access to selected pages in Navicat Monitor.

Notifications

Get notifications via email, SMS, SNMP or Slack whenever a warning or critical condition occurs in your infrastructure. Once notified, you can quickly diagnose and resolve your database issues.

LDAP/AD Authentication

Save time to set up a new and different security method by configuring Navicat Monitor to authenticate with LDAP server or Active Directory.

Migration

Export your Monitor settings if you wish to migrate your application server from one computer to another new machine. The output of the backup script will be a zip file with all required configuration files and settings for the restoration.

Feature Matrix

Real-time Interactive Overview

View all registered MySQL/MariaDB/SQL Server instances and availability groups on one central web-based interface

Monitor your entire estate from one web interface regardless of location or restrictions

Monitor the live MySQL/MariaDB/SQL Server metrics, CPU, memory and swap usage on host machines

Customize your dashboards and widgets for the best overview

Explore historical metrics in an hour

Instance Details

Agentless remote monitoring

Analyze long running queries

Generate reports for server performance metrics

Export reports to PDF files

Alerts

Come preconfigured with over 40 fully-customizable alert policies

See the frequency they are occurring and what, if anything, you need to do about the issue

See who responded to each alert in the past

Get helpful advice on how to improve server performances

Use SMTP, SMS, SNMP Trap and Slack with customizable thresholds

Advanced filters

Query Analyzer

With MySQL 5.6/MariaDB 10.0.11, Performance Schema is used for query analysis

Analyzing Slow Query Log and General Query Log

Analyzing related dynamic management views

Find out queries having the biggest impact on your system

Rich UI to monitor InnoDB deadlock

Store a history to diagnose deadlock problems

Replication Monitoring

Detect Replication automatically

Displays your Replication Topologies and enable you to quickly see the status of each replication

Export topology maps in PDF format

Replication error history for replication trouble shooting

Send alerts when any replication problems are detected

Security Monitoring

Control of access to your monitoring assets and features

Get alerts if there are accounts with no usernames and passwords

Improve MySQL/MariaDB/SQL Server security by sending you alerts

Detect MySQL/MariaDB/SQL Server hacking activities

User Management

Role-based access control

User integration for OpenLDAP or Active Directory

Restrict login or role access by IP Address

Configuration export and restore

Save the most recent configuration and restore whenever you like

Migrate Navicat Monitor to new host

Allow Repository Database migration

**FREE
TRIAL**





















We offer a free trial of Navicat Monitor, please download at :
<https://www.navicat.com/download/navicat-monitor>

Navicat Monitor Overview:
<https://www.navicat.com/products/navicat-monitor>

More than 40% of the Fortune 500 rely on Navicat every day.

Navicat is the choice of over 3 million database users all around the world. Over 160,000 registered customers across 7 continents and 138 countries have chosen our products



| | | | | | | | |
|---------------------|---|--|--|---|--|---|---|
| Instance Types |  MySQL 5.1.73 or later |  MariaDB 10.0 or later |  MSSQL 2008 R2 SP1 or later | | | | |
| Cloud Providers |  Amazon AWS |  Oracle Cloud |  Alibaba Cloud |  Google Cloud |  Tencent Cloud |  Percona Server |  Huawei Cloud |
| System Requirements |  Windows |  macOS |  Linux |  Docker |  Free BSD | | |
| Supported Browsers |  Firefox (Latest Version) |  Chrome (Latest Version) |  Internet Explorer 11 or later |  Microsoft Edge 39 or later |  Safari 9.1.3 or later | | |

PremiumSoft™
PremiumSoft CyberTech Ltd.

PremiumSoft was founded in 1999 and has developed a wide variety of applications for Windows, macOS, Linux and iOS. Our talented team of software engineers is known for producing top-quality software and we maintain a stellar reputation for providing world-class customer support.

Address : Unit 1605-1607, Level 16, Tower 1,
Grand Century Place, Mongkok,
Kowloon, Hong Kong

Phone : +852 - 2498 3422

Office Hour : 9:30 - 18:30 (GMT + 8)

Email: sales@navicat.com

Website: www.navicat.com